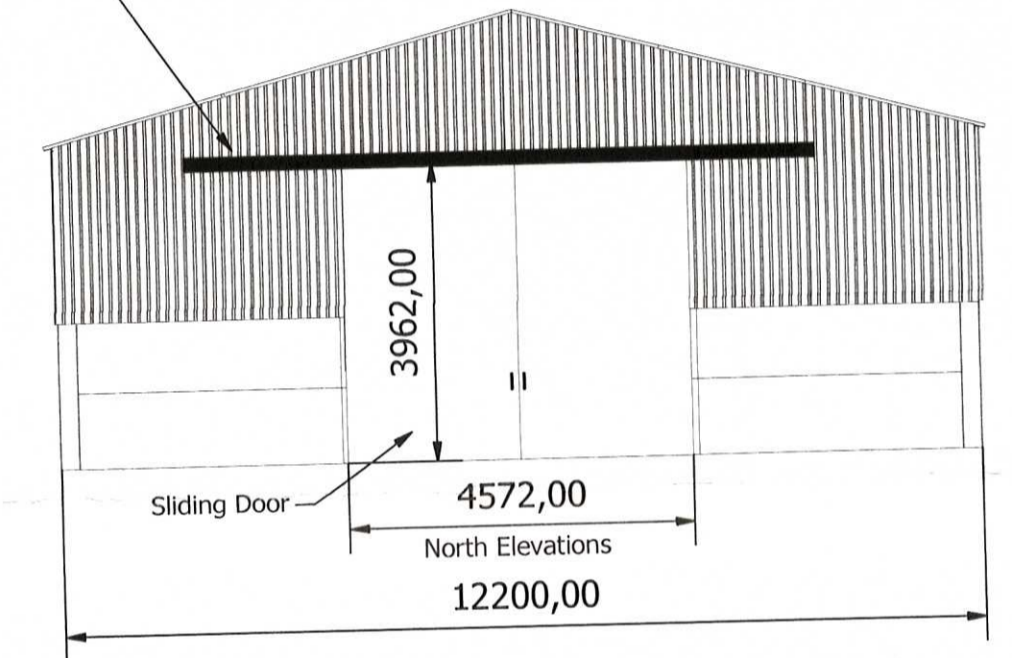
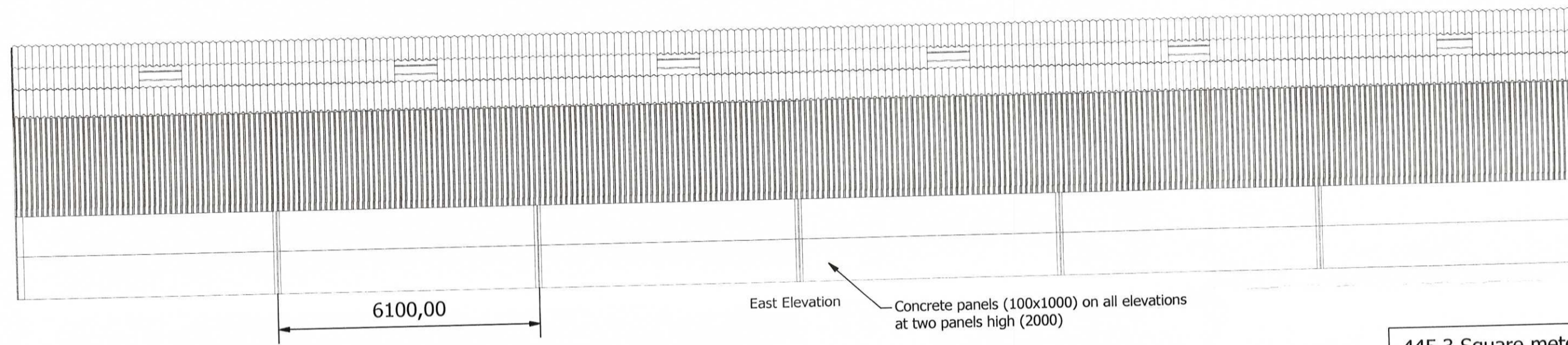
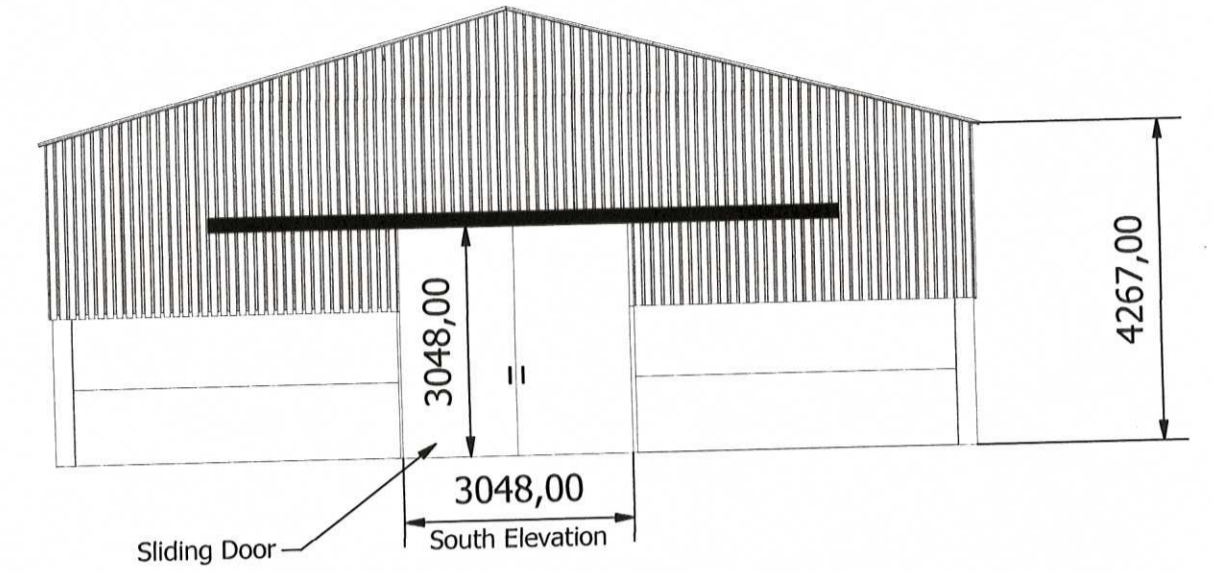
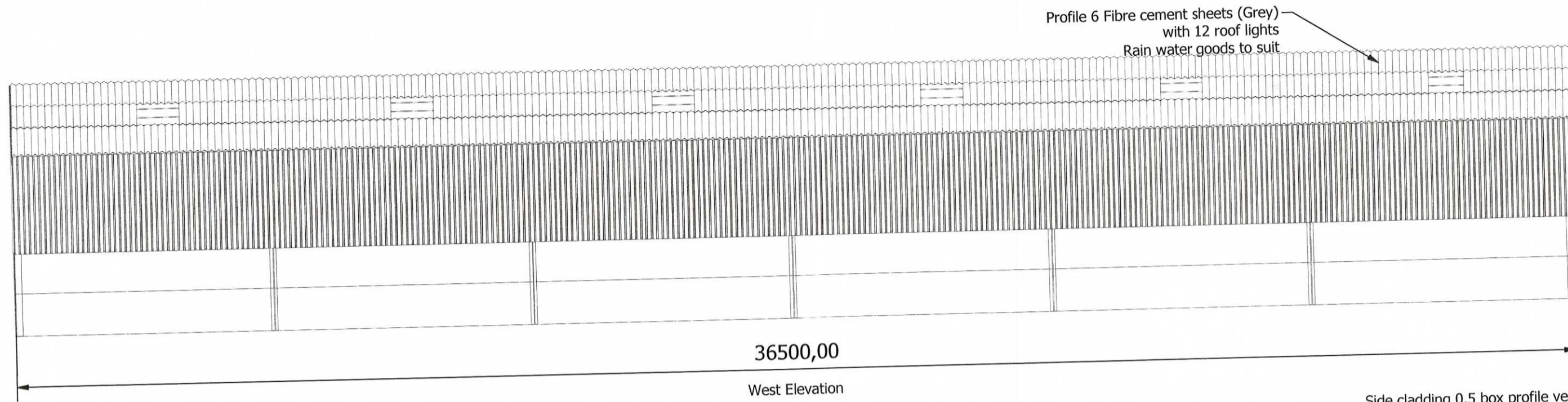
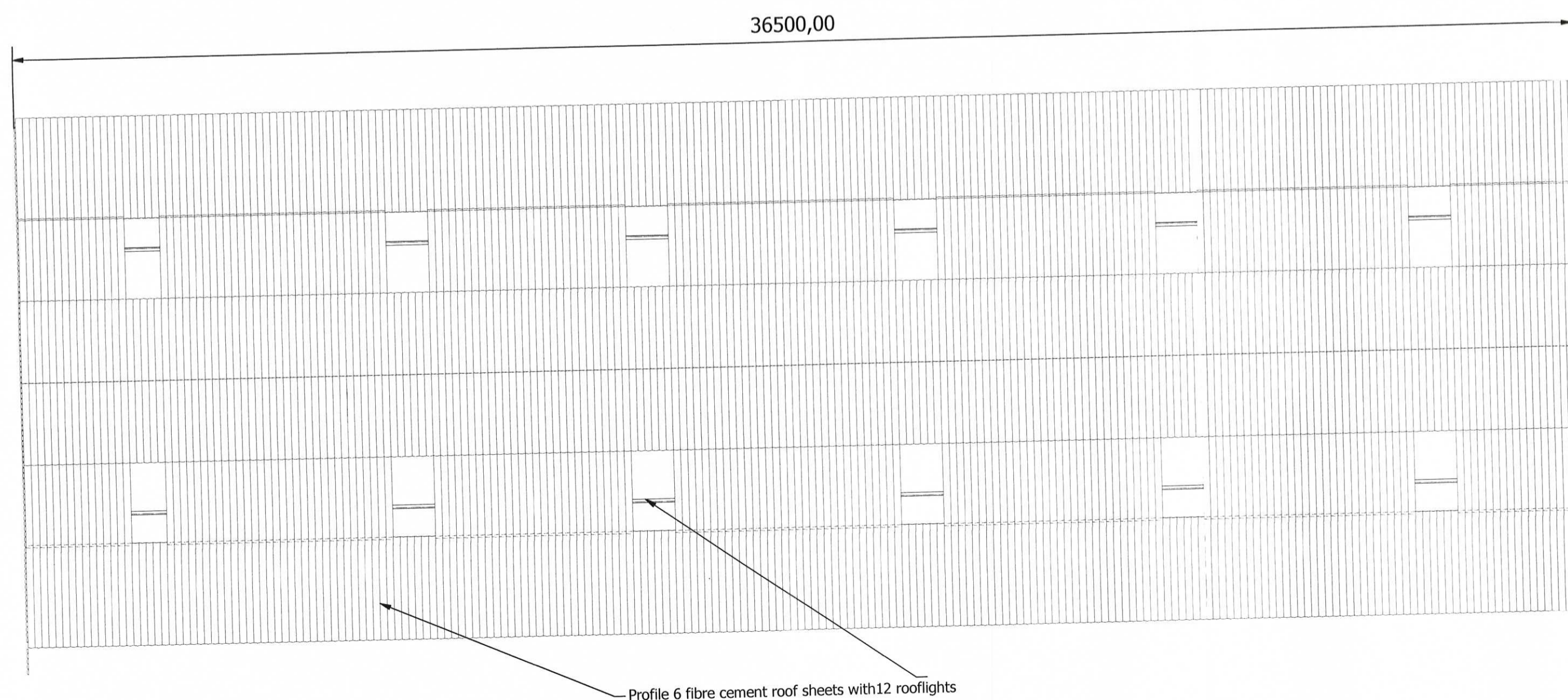


Designed by KW	Checked by	Approved by	Date 14/03/2016
TW Alderslade & Sons, West Fellgate Farm, Wardley, Gateshead, NE108YD			Proposed Building
		Edition	Sheet 1 / 1



445.3 Square meters



Glendale Engineering (Milfield) Ltd,  
Berwick Road Ind. Estate,  
Wooler,  
Northumberland,  
NE71 6AH  
TEL: +44 (0)1668 281464  
FAX: +44 (0)1668 281622  
INFO@GLENDALEENGINEERING.CO.UK  
www.glendaleengineering.co.uk

DRG No. 001 SCALE 1:100 @A2

REV.	DATE	CHECKED	COMMENTS

**GENERAL NOTES**  
 1. The copyright in this drawing is the property of Glendale Engineering. This drawing is issued on condition that it is not copied, reprinted or reproduced nor its contents disclosed either wholly or in part to any third party without either the consent in writing of or in the conditions of a contract with GE ©  
 2. Part or whole of this plan may have been reproduced from a digital data file by permission of Ordnance survey on behalf of the Controller of Her Majesty's Stationary Office. Crown Copyright 2000. All rights reserved.  
 3. All dimensions are in millimetres and all levels are in meters unless otherwise stated.  
 4. The Contractor is to take all reasonable precautions for the location and protection of any public or private apparatus in the vicinity of the works.  
 5. The Contractor is to satisfy himself that all levels, dimensions and other information shown on this drawing are correct. If any discrepancies are found they are to be reported to the Engineer immediately.

ST0485/16/AGR

